

2023 CLASSIC

CLASSIC™



 **AIRSTREAM®**

About **AIRSTREAM**[®]

Exacting craftsmanship. Uncompromising attention to detail. Limitless inspiration for adventure.

There is no denying that Airstream is the world's most iconic travel trailer for a reason. Durable, reliable, and built upon nearly 90 years of innovation, Airstream travel trailers helped write the American travel story. We've crisscrossed the globe, parked at the foot of the Pyramids, explored the National Parks, and camped for the weekend down the road.

Proudly built by hand in Jackson Center, Ohio, USA by hundreds of talented craftspeople, each Airstream travel trailer takes approximately 350 hours to build. Form and function are tightly woven into every thoughtfully-planned inch, and every design is carefully considered. The result is a travel trailer that will last a lifetime – or more.

While we manufacture every Airstream from the wheels up, we like to say that we don't actually build travel trailers. Instead, we build someone's retirement, their well-deserved vacation, or their retreat from a hectic day.

In other words: Airstream builds dreams come true.





AIRSTREAM

CLASSIC

LIVE RIVETED

About Classic

The Classic Travel Trailer is a home away from home in every aspect of its thoughtful design. Built specifically for long-term travel and living, the Airstream Classic is literally, a classic.

With two of our most spacious floor plans ranging from 30 to 33 feet, the Classic Travel Trailer gives you dedicated cooking, dining, lounging, bathroom, and bedroom areas providing a luxurious, homey, and roomy feel. With modern features like Smart Control Technology included, this heritage travel trailer is ready for a well-lived life on the road. Wherever the road takes you.

1 Residential Style Bathroom

The spacious, three-piece residential-style layout has a large shower, porcelain toilet, and a large vanity.

2 Luxurious Shower

In addition to roominess, the shower has a heated floor to warm you up as soon as you step inside.

3 Heated Towel Bar

Step right out of the shower into the comfort of a warm towel.

4 Powered Bed

Adjust to sit or sleep elevated, lie flat, or rest somewhere in between. The powered bed lets you choose your perfect position, with controls located above the bed.





5 Reclining Lounge

The lounge features two integrated recliners with Ultraleather® and individual power controls.

6 Wine Rack

Store 3 standard bottles of wine on the integrated rack and keep your corkscrew handy on the top or bottom cubby shelves.

7 Roman Window Shades

Easily slide the sleek and functional window shades to block out light or increase privacy.

8 LED Entry Door Handle

A lighted grab handle is both functional after dark and adds exterior allure.

9 Doorbell

It's the little touches that really make a travel trailer feel like home. The doorbell at the entrance of the Classic is a bonus your guests will love.

10 Workspace

Be comfortable and productive at the work station with an included Ultraleather® desk chair that can be secured while in tow.





THE FEELING OF HOME

RESIDENTIAL STYLE KITCHEN

The kitchen is one of the most important rooms in a home, and it's no different in the Classic. The galley doesn't ask you to compromise, with a stove, hood, oven, convection microwave, and refrigerator/freezer. Plus, Corian® countertops, a large stainless steel sink, and a Kohler® faucet add to the style. Overhead storage with automatic LED lighting lines both sides of the cabin to offer a plethora of storage options.

BATHROOM IS A THING OF BEAUTY

The Classic 33FB bathroom feels nothing like an RV bathroom. It's a spacious, three-piece residential-style layout, with a large shower and a mirrored double-door wardrobe that makes getting ready a true pleasure. It also includes a heated shower floor to warm you up as soon as you step inside, and a heated towel bar to keep you warm when you step out.

1 Comfortable Mattress

Made with premium memory foam, the AdaptaFlex Mattress sleeps cool and delivers amazing comfort.

2 Superior Audio Experience

Stream music for your devices using Bluetooth® and enjoy crystal clear audio throughout the entire travel trailer.

3 Convection Microwave Oven

With two modes, the convection microwave oven can be used to heat or cook food like a microwave or transform to become a convection oven — using the heating element to bake, roast, and broil.

4 Powered Dinette

When positioned as a table and seating, the dinette has room for four people to comfortably eat and socialize. It can be converted to a sofa or bed within seconds with a touch of a button.

5 Ultraleather® Seating

The lounge and dinette feature a luxurious design and feel for optimal comfort. Plus, they're stain resistant for easy cleaning.

6 Premium Appliances

A Baraldi cooking vent, a microwave, and a stainless steel sink with DuPont™ Corian® cover make cooking not just easy, but enjoyable.

7 Under-bed Storage

With extra under-bed storage, there's a lot of room for packing all of the gear you need for a long trip.





ABSOLUTE LUXURY

If you've wondered how far you can take the concept of absolute luxury. The answer can be found in the Airstream Classic. Odds are, if you want it – this Travel Trailer has it. Everything you see, touch and operate in the Airstream Classic is the top of the line. We're not talking gadgetry for the sake of flare, either. We're talking durable, road tested, best in the business materials and technology meant to last a lifetime – and beyond. The sofa features two integrated recliners with individual power controls. The master bed is also powered which creates more floor space during the day and a cozy reading position at night.

HARDWOOD CABINETRY

The handcrafted hardwood cabinetry is one of the first things you'll notice when you step inside the Classic and visually distinguishes it from other models. The hardwood cabinetry is a perfect combination of versatility, durability and beauty – just what you would expect from Airstream.

1 Rear-view Monitoring
A rear-view camera is mounted to the back of the travel trailer to make reversing and parking so much easier.

2 Power Awning
Camp set up is quick and easy with power awning that extends and retracts with the push of a button.

3 Exterior Low Pressure Gas Grill Connection
Our newest Airstream Weber® Grill is made specifically for ease of use with our low pressure gas grill connection.

4 QuietStream™ Climate Control
Our ducted air conditioning system easily and quickly cools the cabin in relative silence. It even features a heat pump to pull ambient heat from the air.

5 Power Stabilizer Jacks
Powered leveling and stabilization make it faster, easier and simpler to get up and running at the campsite.

6 Solar Panels x 3
Harness the energy of the sun with 3 - 100W rooftop solar panels for keeping your lithium batteries charged.

7 10,000 Maximum Capacity
Load the trailer up with all the gear, toys and supplies you need.
Base Weight: 8,261
Net Carrying Capacity: 1,739

8 Front Stone Guards
Stainless steel stone guards mounted on the front of the travel trailer protect the lower segments from road debris.



Airstream Smart Control Technology

Leave Civilization. Stay Civilized.

With all-new Smart Control Technology, you can control and monitor your Airstream Classic's most important features and amenities from anywhere – and stay connected to the comforts of home, even when you're far from it. That means a more comfortable camping experience every time, everywhere.



Airstream Smart Control Technology is available on the Airstream Classic Travel Trailer. Requires a compatible iOS or Android device and some features may require a wireless data plan. Data rates may apply. Some or all features not available in all areas. See Airstream.com for additional details.

Tire Pressure Monitor System (TPMS)
Real time monitoring of tire pressure on all five tires without vehicle movement required.

AC & Heat Pump
Set the perfect temperature so family, friends and pets are comfortable before and after your adventures.

Tank Levels
Sleep better at night knowing you can monitor your fresh water and holding tank levels.



Vent Fans

Make sure your RV's interior is pleasant and comfortable in every environment.



Awning

If the wind picks up and you're away, confidently close the awning to protect your property.



Lights

After a long day of hiking, turn on your interior and exterior lights from anywhere for a safe and reassuring return.




Wi-Fi Boost & 4G LTE

Stay connected to the amenities you demand with boosted Wi-Fi signal or dedicated 4G data when you're far from home.




Propane

Monitor your propane levels so dinner time is always on time for your hungry family.



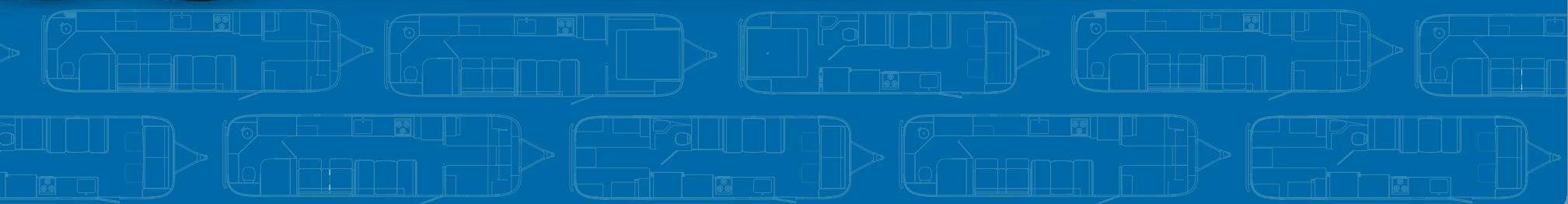
Battery Voltage

Make sure your batteries are charged to keep the good times moving forward.



Locate Your Classic

Wherever you may roam, use the GPS locator to navigate back to your Airstream and even keep tabs on it when it's not in use.





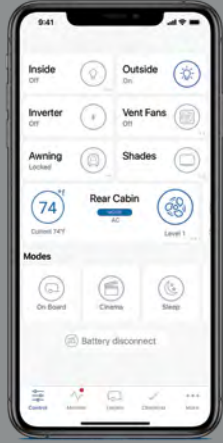
Download on the App Store



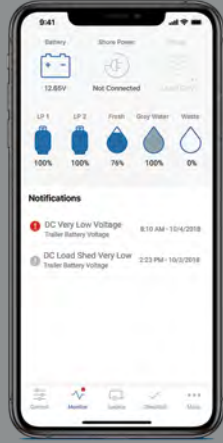
Airstream Smart Control App

Experience the ultimate in camping freedom. Smart Control Technology from Airstream allows you to control and monitor your Airstream's most essential features – from anywhere. Wherever your adventures take you, enjoy the comforts of home right at your fingertips.

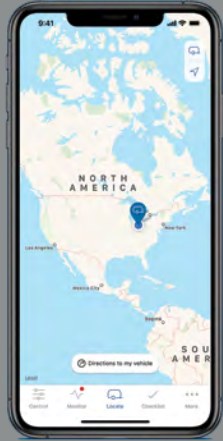
Control



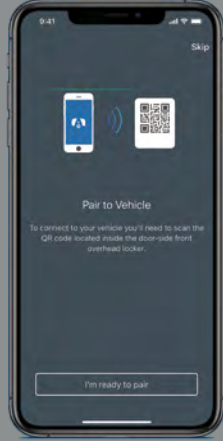
Monitor



Locate



Pair



CLASSIC™

ESTATE BROWN Chamomile Ultraleather®

Choice of Either Queen or Twin Beds



30RB



33FB



Queen Bed
Configuration



Seating



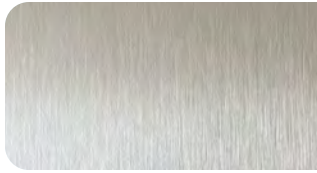
Cabinetry



Accent Wall



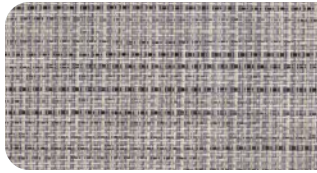
Backsplash



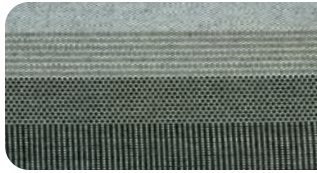
Countertops



Flooring



Awning



CLASSIC™

ESTATE BROWN Earl Gray Ultraleather®

Choice of Either Queen or Twin Beds



30RB



33FB



Twin Bed
Configuration



Seating



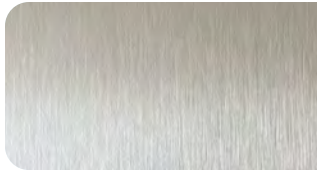
Cabinetry



Accent Wall



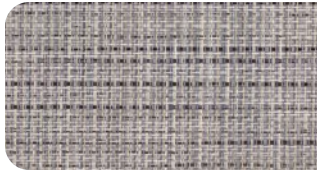
Backsplash



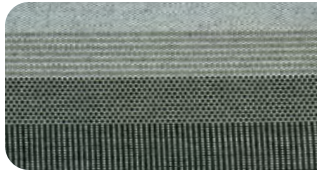
Countertops



Flooring



Awning



CLASSIC

COMFORT WHITE Café Latte Ultraleather®

Choice of Either Queen or Twin Beds



30RB



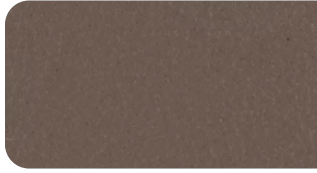
33FB



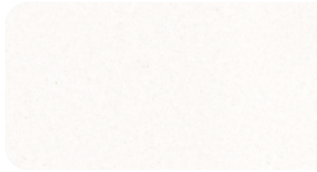
Queen Bed Configuration



Seating



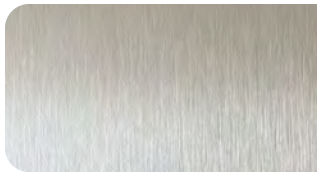
Cabinetry



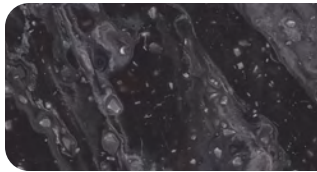
Accent Wall



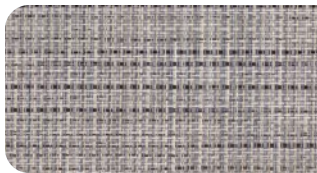
Backsplash



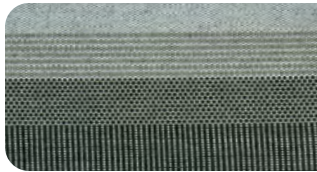
Countertops



Flooring



Awning



Previous model year image shown.

CLASSIC

COMFORT WHITE Earl Grey Ultraleather®

Choice of Either Queen or Twin Beds



30RB



33FB



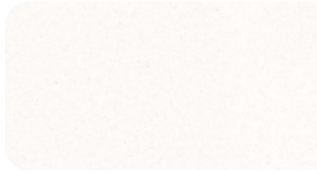
Twin Bed Configuration



Seating



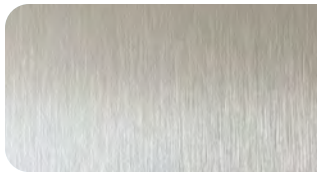
Cabinetry



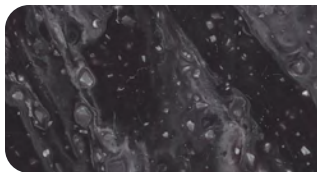
Accent Wall



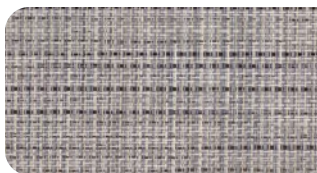
Backsplash



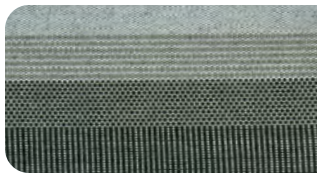
Countertops



Flooring



Awning



Previous model year image shown.

Classic Specifications

	30RB	33FB
Exterior Length	31 ft. 5 in.	33 ft. 3 in.
Exterior Width	8 ft. 5.5 in.	8 ft. 5.5 in.
Interior Width	8 ft. 1 in.	8 ft. 1 in.
Exterior Height with A/C	9 ft. 6 in.	9 ft. 6 in.
Interior Height with A/C	6 ft. 6.5 in.	6 ft. 6.5 in.
Hitch Weight (with LP & Batteries)	850	1000
Unit Base Weight (with LP & Batteries)	7,900	8,375
Maximum Trailer Capacity (GVWR) (lbs.)	10,000	10,000
Net Carrying Capacity (lbs.)	2,100	1,625
Fresh Water Tank (gal.)	54	54
Gray Water Tank (gal.)	37	37
Black Water Tank (gal.)	39	39
50 AMP Service Dual 15,000 BTU A/C with Heat Pump	STD	STD
Hydronic Heating Customized for Airstream	STD	STD
Refrigerator (12v Electric)	10 cu. ft.	10 cu. ft.
Oven (LP Gas)	STD	STD
Convection Microwave Oven	STD	STD
Storage Drawers in Lieu of Oven	OPT	OPT
Interior Windows and Skylights	19	17
Master Bed Configurations (*Replaces Queen)	Queen (60" x 75") Twin* (36" x 80")	Queen (60" x 75") Twin* (36" x 80")
Convertible Dinette to Additional Sleeping	42" x 76"	42" x 76"
Sleeping Capacity	Up to 5	Up to 5

Classic Exterior Features

Semi-Monocoque Aluminum Superstructure	STD
Fluorocarbon Treated UV Protected Aluminum Exterior	STD
Temperature Reducing One Piece White Aluminum Roof	STD
Thermal Barrier Protection Between Interior and Exterior	STD
Handcrafted Welded Extruded Aluminum Window Frames	STD
Tempered Tinted Windows with Double Cam Latching System	STD
Powered ZipDee® Patio Awning with Sunbrella® Fabric	STD
ZipDee® Rear & Roadside Window Awning with Sunbrella® Fabric	STD
LED Dimmable Patio Awning Light	STD
Polished Bumper with Storage	STD

Classic Exterior Features (continued)

LP (2 – 30 lb. Steel Tanks) with auto 2-stage regulator and sensors	STD
Aluminum Removable LP Cover, LP Monitoring System	STD
Multi-Stage Converter with Auto-Detect Features	STD
Exterior LP Gas Low Pressure Grill Connection	STD
Solar Front Window Protection	STD
Stainless Steel Front Stone Guard Protection	STD
Stainless Steel Exterior Shower with Hot & Cold Water	STD
Stainless Steel Lockable Fresh Water Tank Inlet	STD
City Water Inlet with Water Pressure Regulator	STD
Black Tank Flush System	STD
Hand Painted Chassis	STD
Torsion Axle Suspension	STD
Shock Absorber	STD
Powered Hitch Jack with Light	STD
4 Powered Heavy Duty Stabilizer Jacks with Stainless Steel Lockable Compartment	STD
Michelin® LT225/75R16 Tires, Balanced	STD
Stylized Aluminum 16" Wheels	STD
Nev-R-Lube® Sealed Bearings	STD
Nev-R-Adjust® Brakes	STD
Spare Tire – Full Size	STD
300w Solar Package with Interior Monitor	STD
200 Ah Lithium Batteries, Heated with Lockable Compartment	STD
Rear View Monitoring System	STD
Cable TV Hookup	STD
Satellite TV Hookup	STD
Dedicated Waste Hose Storage	STD
LED Lit Entry Door Handle	STD
Custom Aluminum Handcrafted 26" Wide Entry Door with Window	STD
Unique Front Door Key with Heavy Duty Deadbolt	STD
Cast Aluminum Door Hinges	STD
Airstream Custom Aluminum Entry Step	STD
LED Entrance Light	STD
LED Tank Service Light	STD
LED Storage Compartment Light	STD
Cast Aluminum LED Tail Lights	STD
Seamless Composite Flooring	STD
Enclosed Aluminum Insulated Heated Underbelly	STD

Classic Interior Features

Complete Aluminum Interior Walls and Ceiling	STD
Quietstream™ A/C with Heat Pump & Electronic Thermostat	STD
Fantastic® Fan with Thermostat & Automatic Rain Sensor	STD
Probeless Tank Monitoring System	STD
EcoBatt™ Insulation	STD
Handcrafted Aluminum Screen Door with Guards	STD
Panoramic Front Windows with Blackout Shades	STD
Handcrafted Interior Cabinetry	STD
Seamless Luxury Woven Vinyl Flooring	STD
LED Interior Lighting with Dimmer	STD
Overhead Storage with Auto LED Lighting	STD
Electric/LP Water Heater with Extended Hot Water Tank	STD
1000W Pure Sine Inverter	STD
Coat & Key Hooks	STD
Silent, Uniformed Alde Hydronic Heating	STD
CZone Digital Switching with Touch Screen	STD
Integrated Smart Functions within the Touch Screen	STD
Airstream Smart Control w/ App for Apple & Android (US Models)	STD
Airstream Connected Wi-Fi Service (US Models)	STD

Galley, Dinette & Lounge Features

Stainless Steel 3 Burner Cooktop (LP Gas)	STD
Baraldi Cooking Vent with Light	STD
Dupont Corian® Galley Top	STD
Stainless Steel Kohler® Sink with Dupont Corian® Sink Cover	STD
Dupont Corian® Dinette Top	STD
Ultraleather® Lounge and Dinette Seating	STD
Powered Convertible Dinette for Sleeping Accommodations	STD
Flatware Organizer	STD
Fusion Touchscreen Stereo with Wifi, Apple Airplay & Bluetooth® Connectivity, Over-the-Air Software Updates, SiriusXM, Fusion App	STD
Surround Sound and Subwoofer	STD
Smart 32" LED HD TV*	STD
60" Power Screen Smart HD Projection TV with Bose Sound Bar**	STD

Galley, Dinette & Lounge Features (continued)

Omni-Directional Antenna	STD
Roman Shades	STD
Kohler® Faucet	STD
Ultraleather® Lounging Sofa with 2 Powered Footrests	

Bedroom Features

Choice of Either Queen or Twin Powered Beds	STD
AdaptaFlex Memory Foam Mattress	STD
Quilted Bedspread with Duvet	STD
Egyptian Sateen Cotton Bed Sheets	STD
Decorative Throw Pillows	STD
Sleeping Pillows	STD
Reading LED Lights	STD
Under Bed Storage	STD
Cedar Lined Wardrobe with Hanging Bar	STD
HD 12v TV with Omni Directional Antenna	STD
Blackout Pleated Curtains	STD

Bathroom Features

Removable Hand Held Aerating Shower Head	STD
Porcelain Toilet (Macerator in the 33)	STD
Lavy Sink	STD
Roof Vent/Fan	STD
Heated Towel Bar	STD
Retractable Clothes Line in Shower	STD
Kohler® Faucet	STD

Work Station with Ultraleather® Desk Chair**	STD
Safe for Valuables	STD
Soft Closing Hinges	STD
Magic Suede Stain Resistant Window Valances	STD
Brushed Aluminum Backsplash	STD
Exterior Stainless Steel Upgrades	STD
Doorbell	STD
ZipDee® Patio Chairs (Qty.:2)	STD
Airstream Logo Entrance Mat	STD
Fire Extinguisher	STD
Emergency Manual Crank for Powered Hitch Jack	STD
LP, Smoke & Carbon Monoxide Detectors	STD
Built In Winterization Kit	STD
TRA Certified Green: Emerald Status (Highest Rating)	STD
Internally Routed A/C Condensation Drain Line to Wheel Well	STD
3 Year Airstream Limited Warranty (Transferable)	STD
3 Year 24/7 Coach-Net® Roadside Assistance	STD

* available on Classic 30RB

** available on Classic 33FB



AIRSTREAM®

1001 West Pike
 Street, P.O. Box 629
 Jackson Center, OH
 45334 USA
 937-596-6111

www.airstream.com

The Airstream Travel Trailer Fleet



Product information, specifications, and photography in this brochure were as accurate as possible at time of printing. Photographs may contain some features that are optional on your vehicle.

Since we continually strive to improve our products, actual products may differ. Prices and specifications are subject to change without notice. All capacities are approximate and dimensions are nominal. Some features or options may be different or unavailable in other countries.

Warning – This information is intended as a guide only. Weights of individual vehicles may vary. Consult your owner's manual for complete loading, weighing, and towing instructions. Do not overload the travel trailer.

AIRSTREAM®, the Airstream travel trailer trade dress, and all related model names, slogans, logos, trade dress, and trademarks are owned or used under license by Airstream, Inc. All other trademarks are owned by their respective owners.

All content and images
 © Airstream 2022

MKT-000071
 8/21 D